



FLAKE | Polymer ColorFlakes™

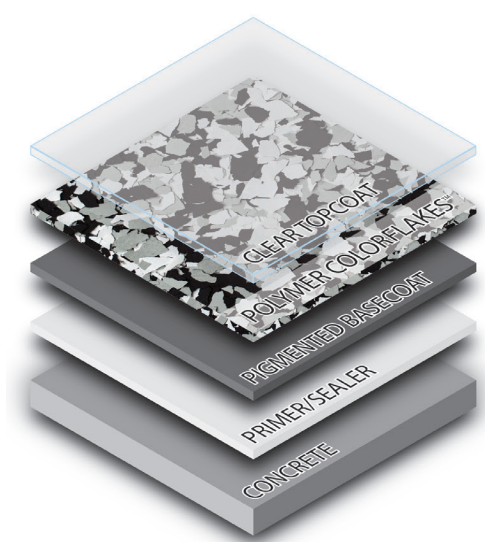
TORGINOL® Polymer ColorFlakes™, commonly referred to as FLAKE, chips or fleck, are composed of water-based resin materials, organic minerals, additives, and various pigments. This unique product is integrally pigmented, brilliantly colored, random in shape, sized within a standardized range, and can be custom blended to achieve optimal appearance and texture qualities with a resinous flooring or wall-coating system.

ColorFlakes™ resinous performance flooring materials are available in over 150 color-styles and six standardized sizes that can be mixed and matched to custom design your floor and enhance any décor.

PERFORMANCE SPECIFICATIONS

Color ($\Delta E \leq 0.5$)	Spectrophotometer (ASTM E1866)	Pass
Dry Film Thickness Gauge	Micrometer (ASTM D1005)	~5 mils
Shape	Visual Evaluation (ASTM D4086)	Random
Odor	Olfactory (ASTM D1296)	Odorless
Surface Texture	Leveling Draw-Down (ASTM D4062)	Smooth
Metamerism	Spectrophotometer (ASTM E1866)	Nonmetameric
Sheen	60° Gloss Meter (ASTM D523)	< 15 units
Dry Film Flexibility	Mandrel Bend Test (ASTM F137)	Pass
Opacity > 98%	Visual Evaluation (ASTM D6762)	Pass
Size Distribution	Normal Sieve Analysis (ASTM C136)	Pass

TYPICAL FLAKE SYSTEM



For best results, a clear topcoat is recommended to fully encapsulate the FLAKE and provide a durable wearing surface.

PRODUCT LIMITATIONS

- ColorFlakes™ are random in shape to provide optimal aesthetics.
- The colorfast pigments used in ColorFlakes™ are UV stable, however, the specifications for the UV stability and environmental durability of your coating system will determine outdoor suitability.
- Due to inherent product characteristics, a small amount of finer particles will be present within each box.

STORAGE

Store ColorFlakes™ in an air tight poly-bag in a dry environment at room temperature to avoid moisture, humidity, and product damage.

ICR COATING SYSTEMS
Tudor Vladimirescu 35A ,Otopeni ,Romania
+40722421390
office@icrsolution.com
www.icrsolution.com

SYSTEM ADVANTAGES

- Custom blending and color matching
- FLAKE texture provides anti-slip qualities
- Over 150 color styles in stock
- Non-flammable
- Water-based chemistry
- Optimal flexibility & strength
- Colorfast, UV stable pigments
- Easy and fast application
- Custom blend matching expertise
- Lab-tested resin compatibility
- Custom packaging & label options
- No minimum order quantities
- Diligent quality control program

RESIN SYSTEM COMPATIBILITY

Lab-tested resin system compatibility (Pass/Fail)	
Epoxies	Pass
Methyl Methacrylates (MMA)	Pass
Polyaspartics	Pass
Polyureas	Pass
Polyurethanes	Pass
Solvent-based Coatings	Pass
Water-based Coatings	Pass
Unkown resin compatibility testing recommended prior to use.	

APPLICATION SPECIFICATIONS

Typical FLAKE flooring application coverage rates:

Flake Size	Full Coverage	Partial Coverage
Original (1")	8 - 10 SF/LB	25 - 250 SF/LB
1/2"	7 - 9 SF/LB	25 - 250 SF/LB
1/4"	5 - 7 SF/LB	25 - 250 SF/LB
1/8"	4 - 6 SF/LB	25 - 250 SF/LB
1/16"	3 - 5 SF/LB	25 - 250 SF/LB
1/32"	2 - 4 SF/LB	25 -250 SF/LB

Coverage rates vary depending on application techniques.

COLOR PALETTE - Standard Colors

F9985	SUSIE-Q	F1425	IVORY	F9956	KHAKI	F9907	BLUE OX
F1770	SALMON	F9909	SUGAR COOKIE	F9953	HONEYDEW	F1790	TRUE BLUE
F1680	PEACH	F9994	SAND DUNE	F1120	CREST GREEN	F6604	PRIMARY BLUE
F5303	CAPPUCINO	F1520	MILKWEED	F1430	JASPER	F9983	HYPNOTIC
F9805	CARROT CAKE	F9910	BUTTERMILK	F6613	SAGE	F9992	COSMO
F1640	PATIO RED	F6614	CREAM	F1600	OLIVE	F1130	DARK BLUE
F6612	CREAMY ORANGE	F5301	CORNMEAL	F9970	MOSS	F9969	NAVY
F5103	SORBET	F5302	CARDBOARD	F1560	MINT GREEN	F9965	LAVENDER
F6615	PUMPKIN	F1785	TAN	F9991	GARDENVIEW	F1020	AMETHYST
F9979	SQUASH	F5307	CAMELBACK	F6617	TEAL	F9989	PURPLE HAZE
F2160	ORANGE	F9986	EGGSHELL	F9990	SLIME	F5104	AFRICAN VIOLET
F6804	GLADIOLA	F1780	SCONE	F5910	JD GREEN	F9993	GRAPE
F9806	FLESH	F1160	DOVE GRAY	F5102	LIME	F9951	PLUM
F5201	MOONSHINE	F5252	CEMENT	F9916	FAVRE	F1820	WHITE
F1760	ROSE	F9957	TAUPE	F1360	FOREST GREEN	F2250	SEMI-TRANSPARENT WHITE
F9977	DAIQUIRI	F9960	NAVAJO BEIGE	F6723	CAMO GREEN	F9959	ANTIQUE WHITE
F1055	BRICK RED	F6601	BUFF	F6611	EVERGREEN	F9958	ALPACA WHITE
F1080	CANYON RED	F9911	FOSSIL	F1420	HUNTER GREEN	F9800	SOMMELIER
F6609	BURNT RED	F9981	POTTER	F9984	SONIC	F1800	WHISPER GRAY
F5935	RUSTIC RED	F1045	BEIGE	F9952	AQUAMARINE	F9903	ONLINE
F9973	COPPERTONE	F9954	CARAMEL	F9971	PEPPERMINT	F1410	GRANITE
F7551	TERRA COTTA	F9912	TOAST	F9962	JETSTREAM	F5305	TABU
F5118	FIREWEED	F6602	LATTE	F9966	MORNING FOG	F6606	NEUTRAL GRAY
F9920	CHERRY BOMB	F1320	FAWN	F1480	MEDIUM GRAY	F9961	FUNCTIONAL GRAY
F6721	LIPSTICK RED	F1040	AUTUMN BROWN	F9964	SKY BLUE	F9987	STONE
F9978	TOMATO	F5116	WIGWAM	F5101	SEASPRAY	F9801	DOLPHIN
F9995	BERRY	F5219	STICKS & STONES	F9988	BABY BLUE	F1090	CHARCOAL
F2240	RED	F6607	CLAY	F9905	HEAVEN	F5182	SPACE GRAY
F1070	BURGUNDY	F5304	MUD	F1720	POWDER BLUE	F5306	PORPOISE
F9975	RAISIN	F5115	PUTTY	F9968	STEEL BLUE	F1415	GRAPHITE
F6616	LEMON YELLOW	F1000	ADOBE BEIGE	F1200	DUSK BLUE	F9904	DARK GREY
F9908	CANARY YELLOW	F5117	ACORN	F6621	STORMY BLUE	F9955	BATTLESHIP GRAY
F6622	SUNRISE YELLOW	F5052	CHOCOLATE	F9972	MOODY BLUE	F5114	EBONY
F2200	PRIMARY YELLOW	F9982	GRAVY	F9963	COBALT BLUE	F5920	CYBERSPACE
F5051	AFTERGLOW	F9996	REDWOOD	F1140	DELRAY BLUE	F9902	BLACK IRON OXIDE
F1400	GOLD	F1060	BROWN	F9967	ROYAL BLUE	F1050	BLACK
F1570	MUSTARD	F1100	COCOA BROWN	F9974	BRILLIANT BLUE		

FLUORESCENT

*Black Light Sensitive Colors**

F4000	B.L.S. BLAZE ORANGE
F4040	B.L.S. CHARTREUSE
F4080	B.L.S. HOT PINK
F4120	B.L.S. ROCKET RED
F4160	B.L.S. SIGNAL GREEN
F4180	B.L.S. HORIZON BLUE

PHOSPHORESCENT

*Glow-in-the-Dark Colors**

F9110	BLUE GLOW
F9120	GREEN GLOW

* Phosphorescent and fluorescent colors are not UV stable and are intended for indoor use only.

MARBLEFLAKES™

Specialty Colors

F9303	PUMICE STONE
F9304	OBSIDIAN STONE
F9305	GARNET STONE
F9307	SCHIST STONE
F9309	BASALT STONE
F9311	DOLERITE STONE

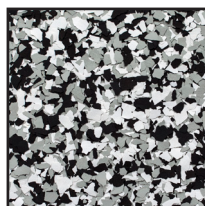
SIZE PROFILES



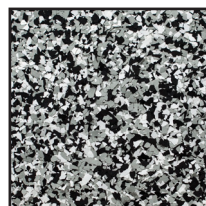
Original (1")



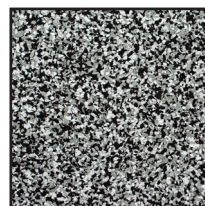
1/2"



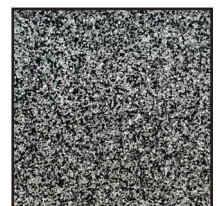
1/4"



1/8"



1/16"



1/32"

DISCLAIMER: The colors shown in this brochure may not be exact due to printing process limitations. For absolute color fidelity, colors should be selected from physical samples.